

Instruction Sheet

For Analogue Panel Meter type SWT.



© Zimmer Instruments Order No. EQ-SWInstruction-E1.R0-920807-43-2013-EN

1.0 General :

This meter complies with International standard IEC 1010-1 for safety and is conforming to routine test as per IEC 51. The test equipment used is traceable to National/International standards.

This product must be used after mounting in panel with hardware supplied, with wires permanently connected to terminal as specified.

2.0 Meaning of Symbols :

CE EU conformity mark

3.0 Safety specifications (IEC1010) :

- * Indoor use
- * Altitude up to 2000m
- * Temp. -10 to +55°C
- * Maximum relative humidity 80% for temperature up to 31°C decreasing linearly to 50% relative humidity at 40°C
- * Basic Insulation
- * Pollution degree 2
- * Installation Categories (overvoltage category) : 600V CAT III

4.0 Equipment Installation :

- * Due consideration should be given to space behind the meter to allow for bends in connecting cables.
- * Ensure that wires do not remain under tension.
- * The product do not have internal protection against overload & short circuit. Hence external safety protection should be provided. It is recommended to install protective device near equipment.

5.0 Operation & Maintenance :

- * Equipment must be installed & maintained by suitable qualified person.
- * If equipment is used in a manner not specified by the manufacturer, the protection provided by the equipment may be impaired.
- * Instrument with damaged bezels or glasses must be disconnected from mains.
- * Back cover must be snapped into place for protection against accidental contact.
- * Disconnect supply before replacing scales, bezels or glasses.
- * There are no user serviceable parts in this product
- * Instruments to be used in grounded panel.

6.0 Equipment Rating :

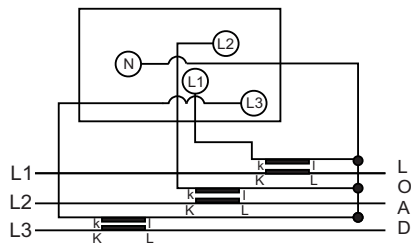
As per information on sticker and Dial of the instrument.

7.0 Burden :

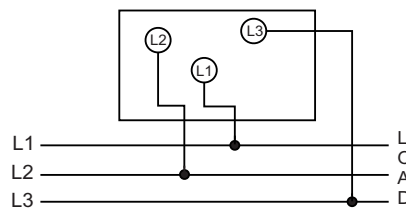
Voltmeters : < 4.5VA
 Ammeters_< 5A : < 0.5VA

Connections:

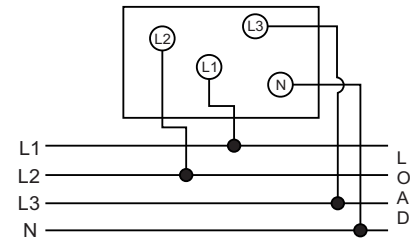
AC Ammeters With Selector Switch



AC Voltmeters 3 Phase 3 Wire



AC Voltmeters 3 Phase 4 Wire



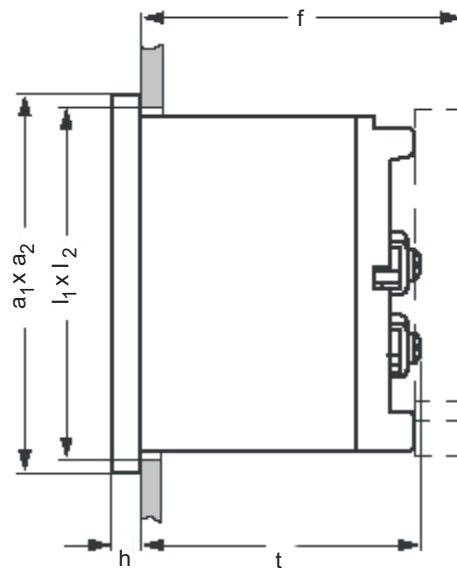
For Single phase system there will be 4 switch positions as-
OFF L1 L2 L3

For 3 phase 3 wire system, 4 switch positions are as-
OFF L1-L2 L2-L3 L3-L1

For 3 phase 4 wire system, 6 switch positions are as-
L1-L3 L2-L3 L1-L2 L1-N L2-N L3-N

For 3 phase 4 wire system, 7 switch positions are as-
OFF L1-L3 L2-L3 L1-L2 L1-N L2-N L3-N

Dimensions:



Front in mm	Nominal Dimensions, mm		Cutout, mm l ₁ x l ₂	Installation Depth Including Terminal (t), mm	Installation Depth Incl. Full back Cover (f), mm
	a ₁ x a ₂	h			
72 x 72	72 x 72	5.5	68 ^{+0.7} x 68 ^{+0.7}	53	64
96 x 96	96 x 96	5.5	92 ^{+0.8} x 92 ^{+0.8}	53	64

ZIMMER INSTRUMENTS

G-42521, Str.26, Ballindamm, Hamburg, Germany
 Tel.: +49 40 810 26 67 / 7201252
 Fax: +49 40 7201253
 Email: info@zimmer-instruments.com
 www.zimmer-instruments.com

